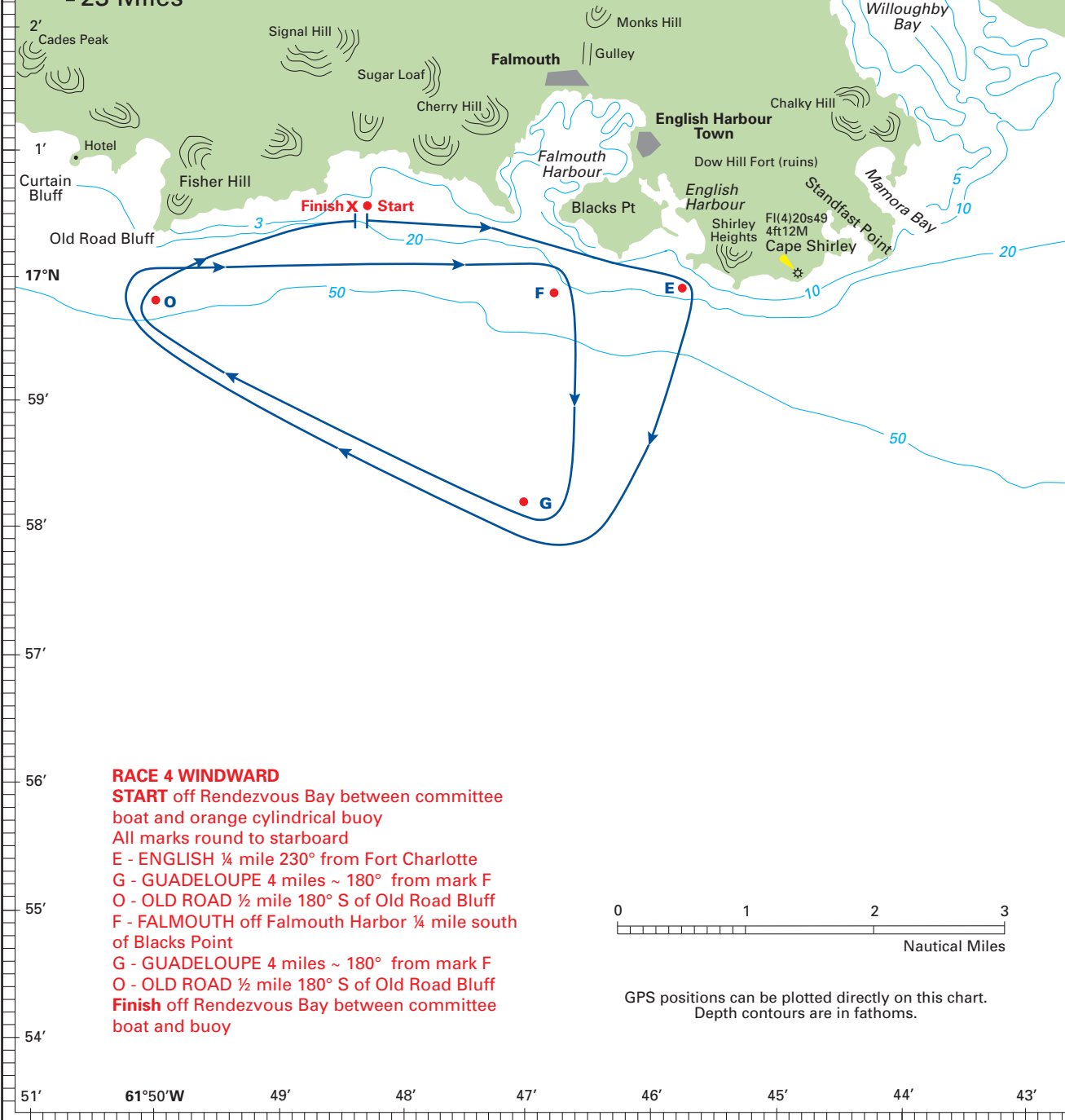
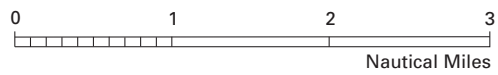


RACE 4 Windward ≈ 23 Miles



RACE 4 WINDWARD
START off Rendezvous Bay between committee boat and orange cylindrical buoy
 All marks round to starboard
 E - ENGLISH ¼ mile 230° from Fort Charlotte
 G - GUADELOUPE 4 miles ~ 180° from mark F
 O - OLD ROAD ½ mile 180° S of Old Road Bluff
 F - FALMOUTH off Falmouth Harbor ¼ mile south of Blacks Point
 G - GUADELOUPE 4 miles ~ 180° from mark F
 O - OLD ROAD ½ mile 180° S of Old Road Bluff
Finish off Rendezvous Bay between committee boat and buoy



GPS positions can be plotted directly on this chart.
 Depth contours are in fathoms.



See Imray - lolaire chart A27 Antigua
 Street's Guides to the Eastern Caribbean are available on Amazon.com
 For information on guides, charts, hurricanes plus insurance visit www.streetiolaire.com